



M Y N A HSM

RocConnect Suite
Version 1.0

Quick Start Guide

DATE: 3/2/2010

Distribution is subject to copyright.

Disclaimers

©MYNAH Technologies 2006. All rights reserved.

Designs are marks of MYNAH Technologies; Emerson Process Management, DeltaV, and the DeltaV design are marks of Emerson Process Management. All other marks are property of their respective owners.

While this information is presented in good faith and believed to be accurate, Mynah Technologies does not guarantee satisfactory results from reliance upon such information. Nothing contained herein is to be construed as a warranty or guarantee, express or implied, regarding the performance, merchantability, fitness or any other matter with respect to the products, nor as a recommendation to use any product or process in conflict with any patent. Mynah Technologies reserves the right, without notice, to alter or improve the designs or specifications of the products described herein. All sales are governed by Mynah Technologies' terms and conditions, which are available on request.

Prerequisites

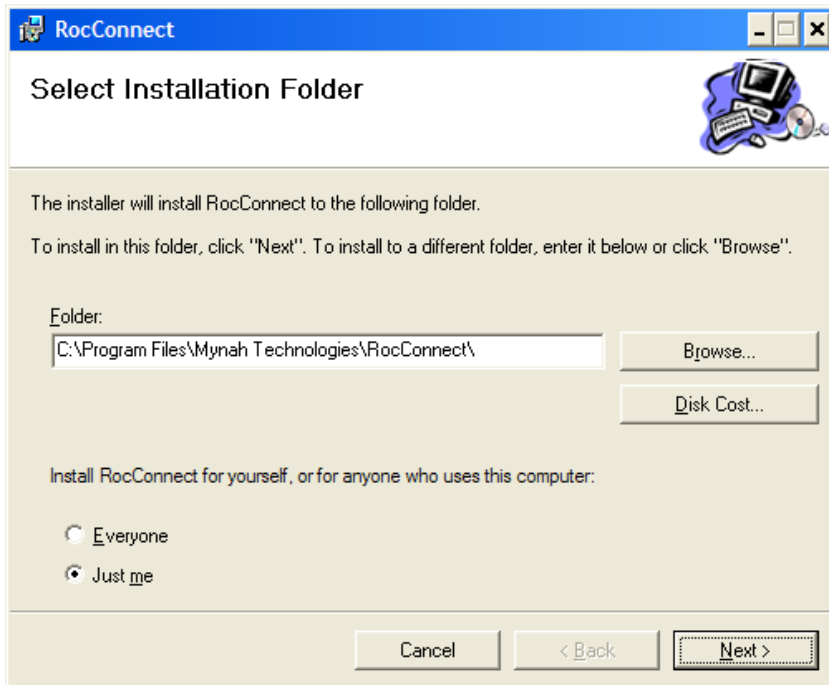
In order to install the RocConnect Suite, you must first have either a Professional Plus or application station version of DeltaV installed.

Installation

1. Stop the DeltaV service.
2. Double-click on the “Installer.msi” file.

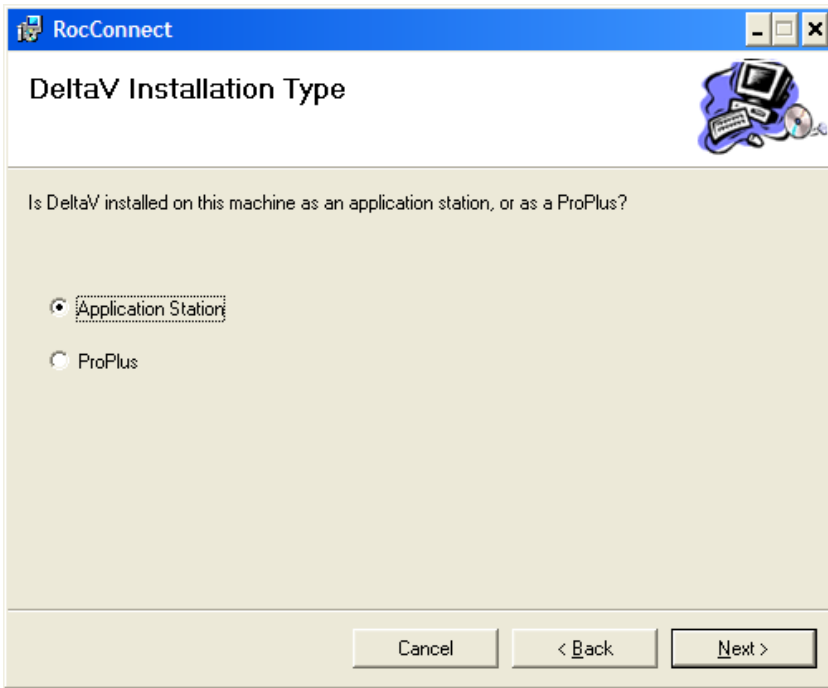


3. Click **Next >** at the welcome screen.



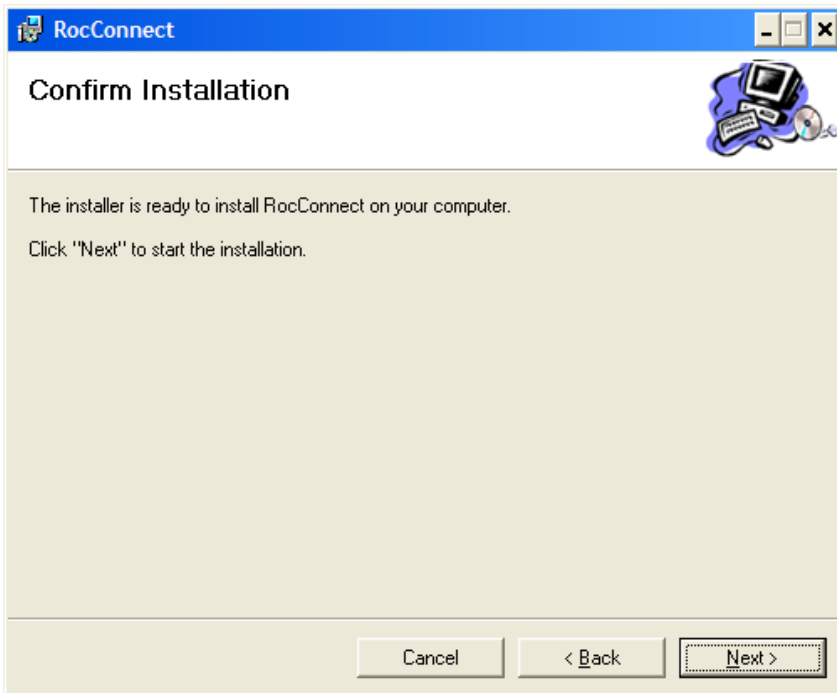
4. Change the installation location, if so desired.
5. If you want all users to have access to the ROC Explorer utility, select **Everyone**.

6. Click **Next >**.

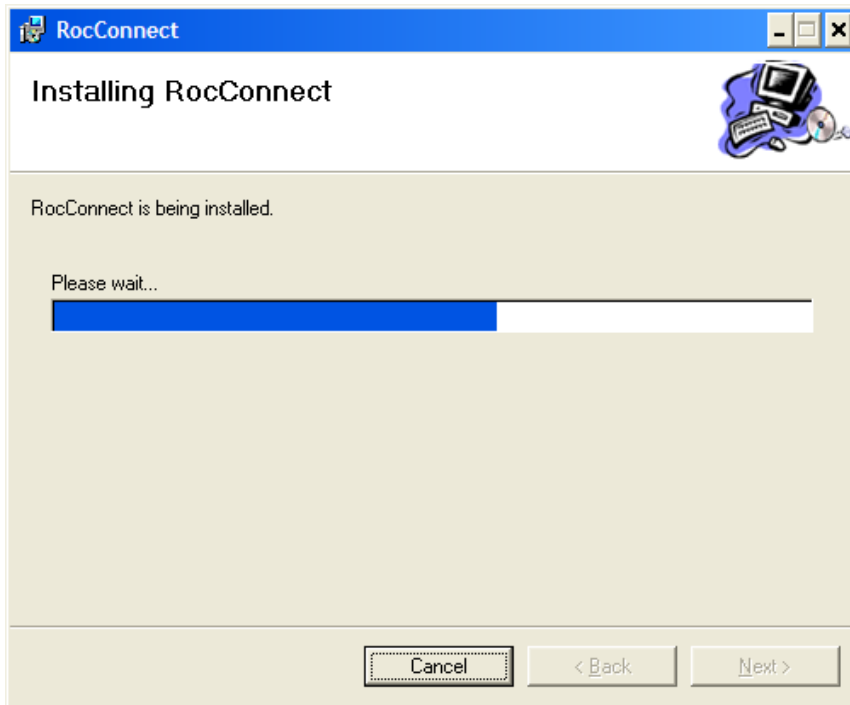


7. Select the type of DeltaV installation that exists on the computer.

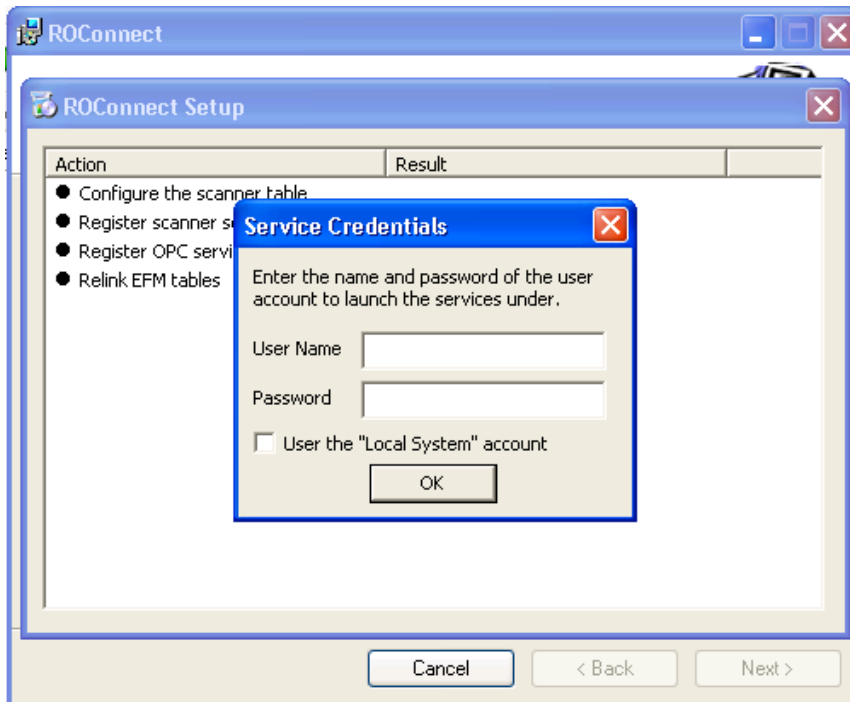
8. Click **Next >**.



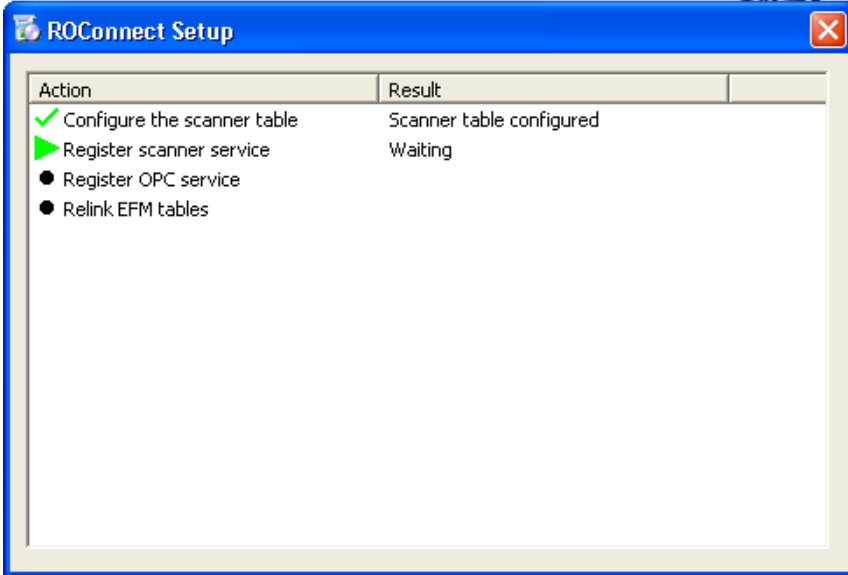
9. If you are ready to install, click **Next >**; otherwise, use **< Back** to return to a previous screen and change your entries.



10. Wait for the installer to copy files and configure the services. You may see some black command shell windows pop up and disappear. This is normal.



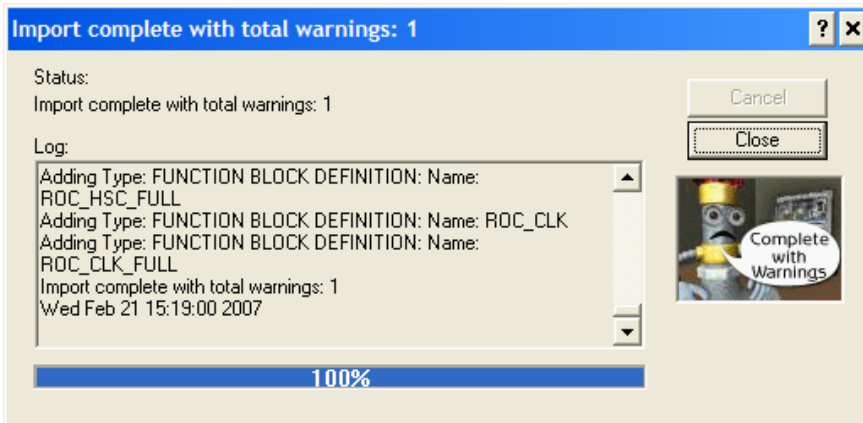
11. Select the account under which the RocConnect driver will run.
12. Select OK.



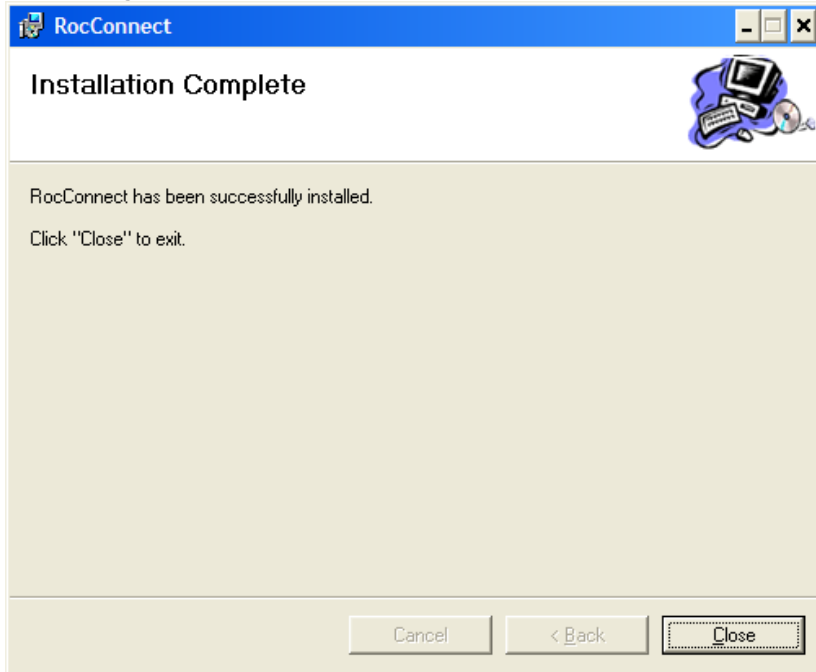
Driver will be loaded.

If you are installing to a Professional Plus computer the ROC Points function blocks will be imported at this point. You will see the standard DeltaV import progress dialog appear and the function blocks will be automatically imported.

If this is the first time the function blocks are being installed, the import will complete with one warning about a missing SCHEMA block. This is normal.



If you are upgrading or reinstalling the ROConnect suite, you likely be asked by the import dialog whether you should attempt to update existing database items. Select **No to All**. If you attempt to overwrite existing function blocks you will receive many errors, but the installation will not be negatively affected in any way.



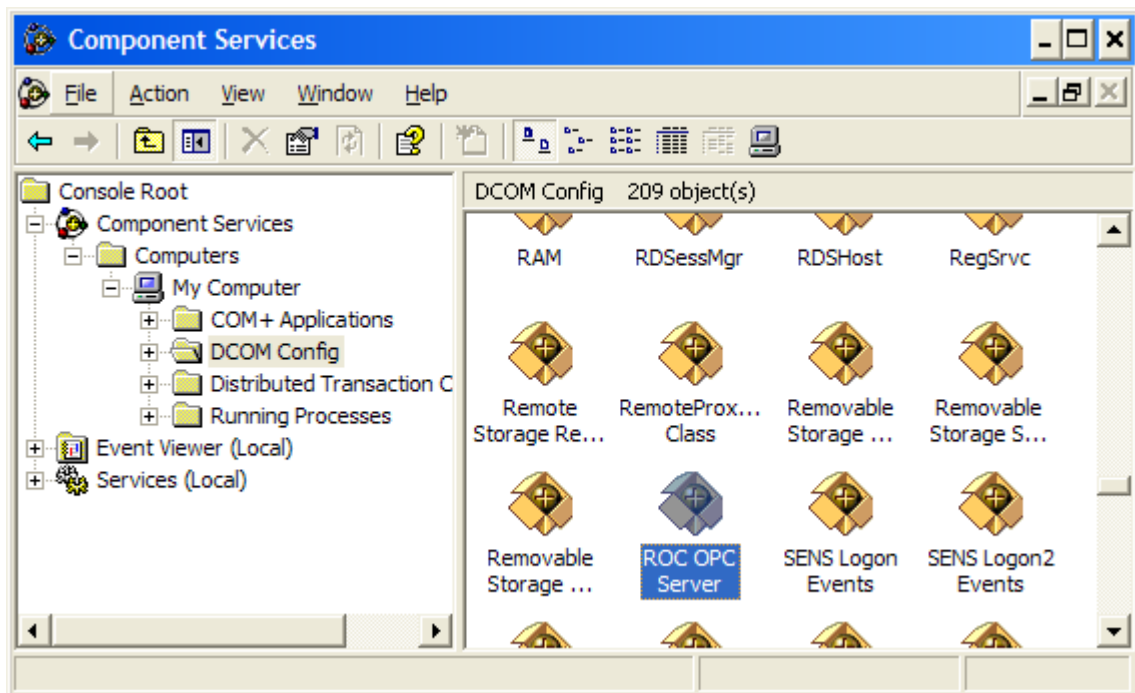
13. Click **Close** to exit the installer.
14. Restart the DeltaV service and start the DeltaV ROC Scanner and ROC OPC services.

If you are installing onto an application station, then the installation is complete at this point.

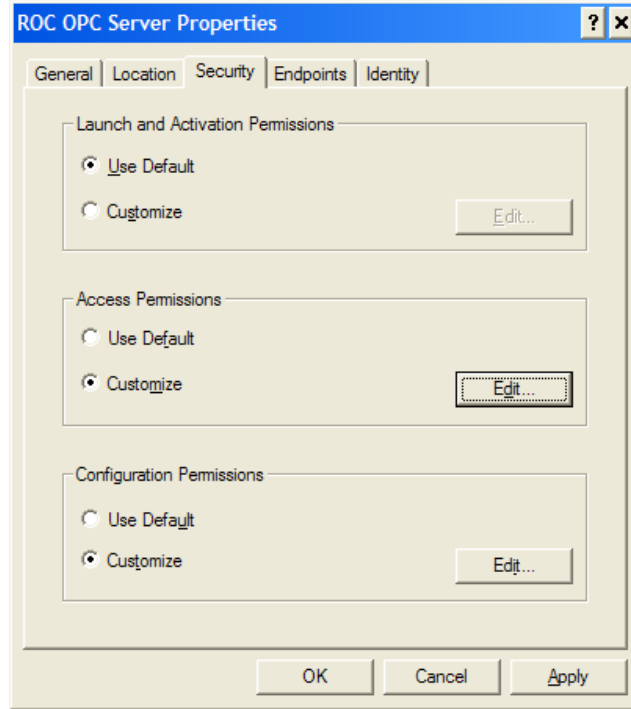
OPC Access Permissions

After installation, only the user specified in step 7 will be able to access the OPC server. In order for other users to access the server, the permissions of the DCOM component must be modified. If the user specified in step 7 is the only one that will need to access the server, this section can be skipped.

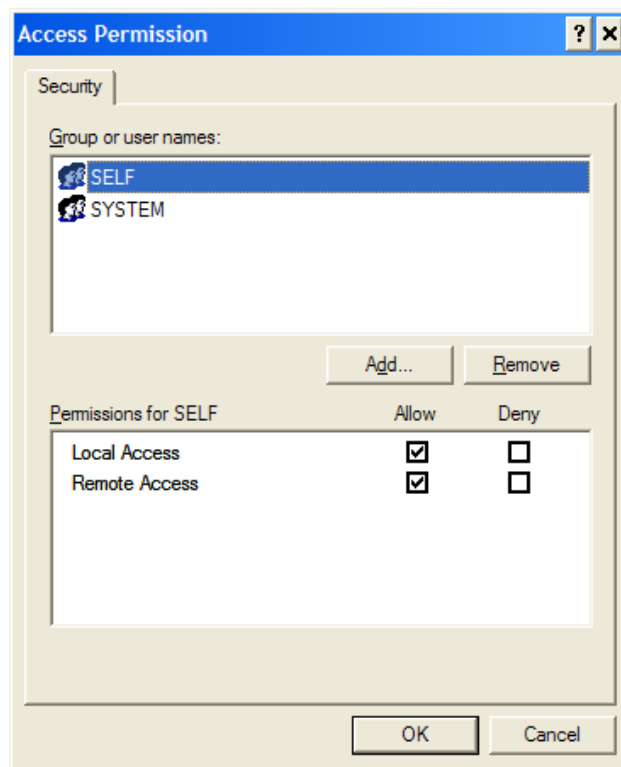
1. Open the Windows Control Panel.
2. Double-click on Administrative Tools.
3. Double-click on Component Services.
4. Navigate to \Console Root\Component Services\Computers\My Computer\DCOM Config.



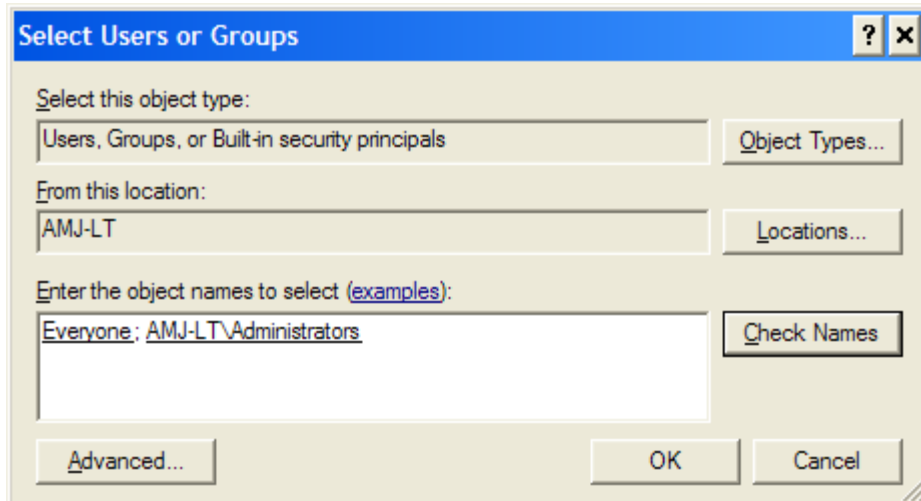
5. Right-click on ROC OPC Server; select Properties, and the Security tab.



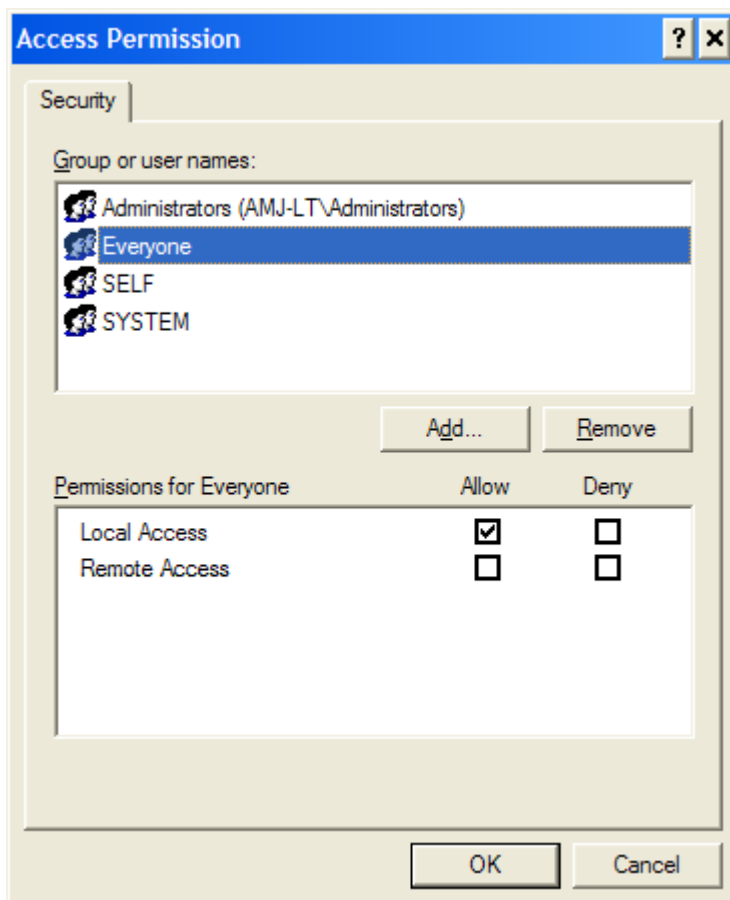
6. In the Access Permissions group, select **Customize**, then click **Edit...**



7. Click **Add...**



8. Enter the users and groups that you want to grant access to. Multiple users and groups can be entered, if separated by semicolons. Clicking on Check Names will validate your entries.
9. Click **OK**.
10. Verify that the new users and groups have been granted the Local Access permission.



11. OPC access permissions are complete. Your installation is finished.