

Quickstart Installation Guide

This Guide previews how to quickly install and validate MiMiC v3. For details on configuring and operating your MiMiC System, please reference Using MiMiC in the online help system, found in the Help menu of the application and on the website at <http://www.mynah.com/mimic> under user docs. For convenience, a [PDF](#) of this information can be downloaded from MYNAH's web site.

What is in the distribution?

The distribution CD contains the following:

Mimic3Installer.msi	The MiMiC distribution
MiMiC Setup.exe	Executable to launch the installation splash screen
Setup.exe	Used to manually run Mimic3Installer.msi
SQLEXPR.EXE	The Microsoft SQL Express distribution
Dotnetfx	A folder containing the Microsoft .NET framework

System Requirements

Supported Operating Systems

- MS Windows XP Professional (SP2)
- MS Windows 7 Professional or Ultimate (32-bit or 64-bit)
- MS Windows Server 2003 SP2 (required to use MiMiC Server option)
- MS Windows Server 2008 SP1 (required to use MiMiC Server option)

Minimum Hardware Specifications (up to 5,000 SIO tags)

- Intel Core 2 Duo Quad Processor Q9650
- 3.0 GHz, 12MB L2 cache, 1333MHz FSB
- Video card with 512 MB cache and WXGA resolution
- 4 GB RAM
- 80 GB hard disk ([details](#))
- 16x DVD-ROM
- 2 Network Interface Cards
- (Recommended) Internet access for validation and upgrade notification

Minimum Hardware specifications (5,000 - 15,000 SIO tags)

- Intel Xeon Quad Processor W5580
- 3.2 GHz, 8MB L2 cache, 1333MHz FSB
- Video card with 512 MB cache and WXGA resolution
- 8 GB RAM
- 80 GB hard disk ([details](#))
- 16x DVD-ROM
- 2 Network Interface Cards
- (Recommended) Internet access for validation and upgrade notification

MiMiC Server Requirements

- MS Windows Server 2003 SP2
- MS Windows Server 2008 SP1
- Microsoft Terminal Services with sufficient Client Access Licenses
- A minimum of 4 GB RAM plus 256 MB per remote user

MiMiC Hard Disk Usage

- 140 MB for program files
- 40 MB per database (average), default location is the [Installation Directory](#), may be relocated.
- 7 MB per [database backup](#) (average), located in the same directory as the database.
- 10 MB per [Snapshot](#) (average), snapshots must reside in the [Installation Directory](#).

Installing MiMiC

Insert the MiMiC Installation CD into the PC's CD/DVD drive. The following MiMiC Setup splash screen will appear:



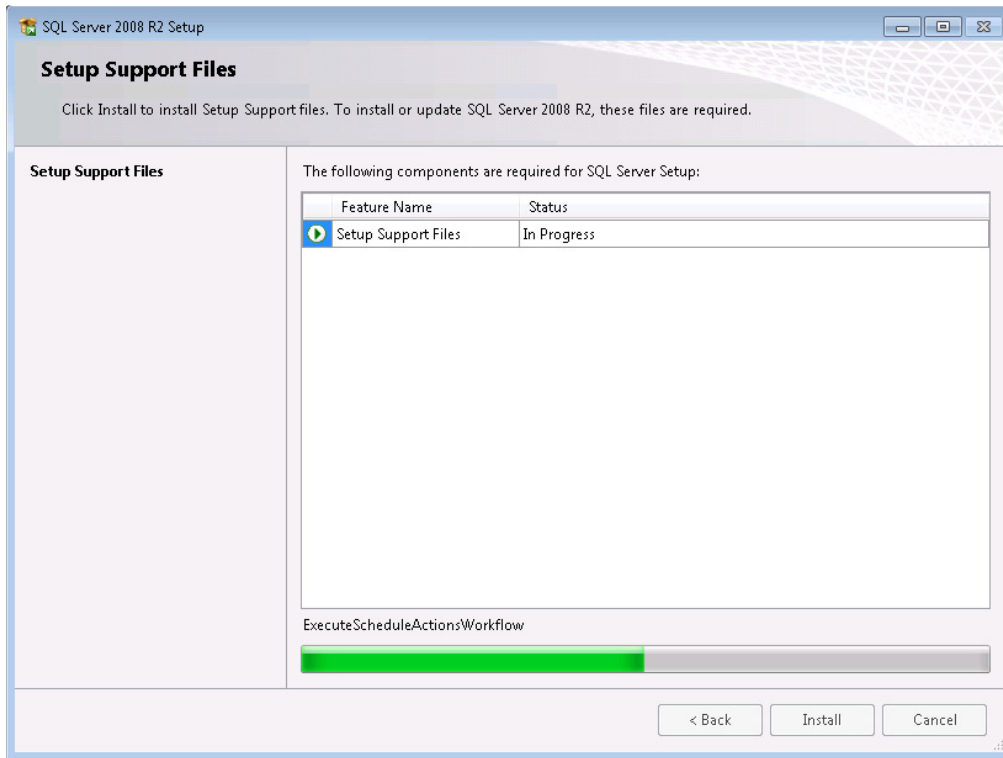
Critical Note: Microsoft Terminal Services must be installed and configured **prior** to installing MiMiC 3, failure to follow this procedure will deactivate the software. If installing MiMiC on a server with Terminal Services take a look at the following preparatory procedure, [Microsoft .NET Framework Presence Check](#) .

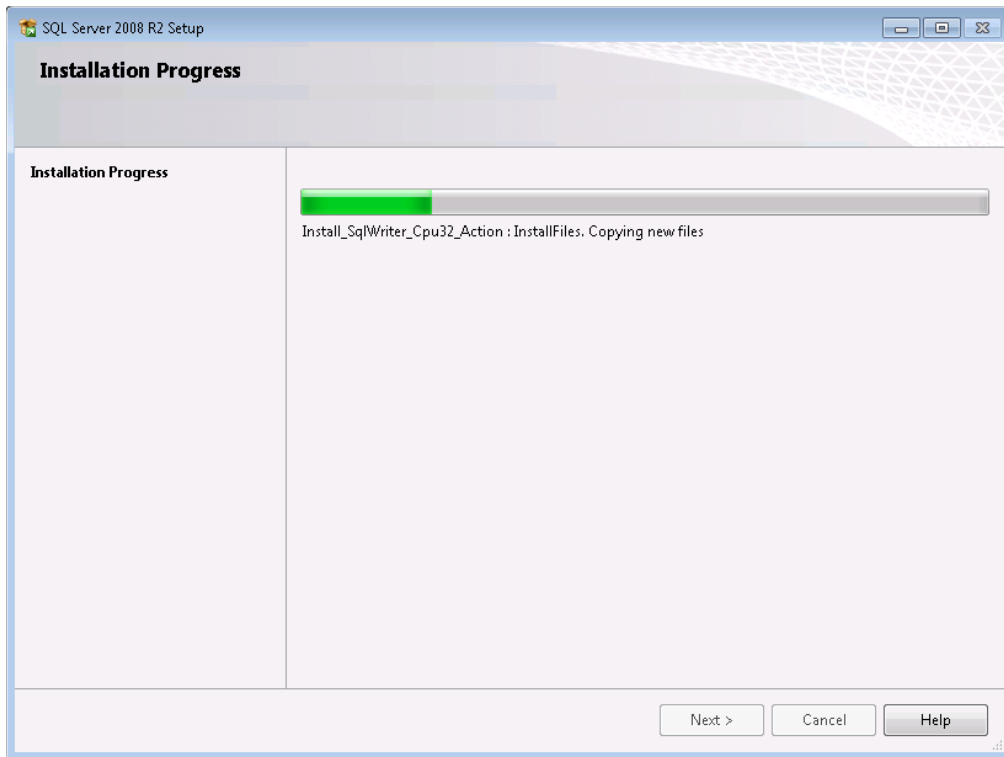
Click **Install** to begin installation. The installation process is fully automated, requiring user intervention only for confirmation of license acceptance and to verify where the MiMiC application should reside on the hard drive.

Microsoft SQL Server Setup

If the Installer determines that Microsoft SQL Express is not present on the PC, then it will install the SQL database components as shown below in Step 1. Otherwise, the Installer will proceed directly to Step 2.

1. Microsoft SQL Server Setup

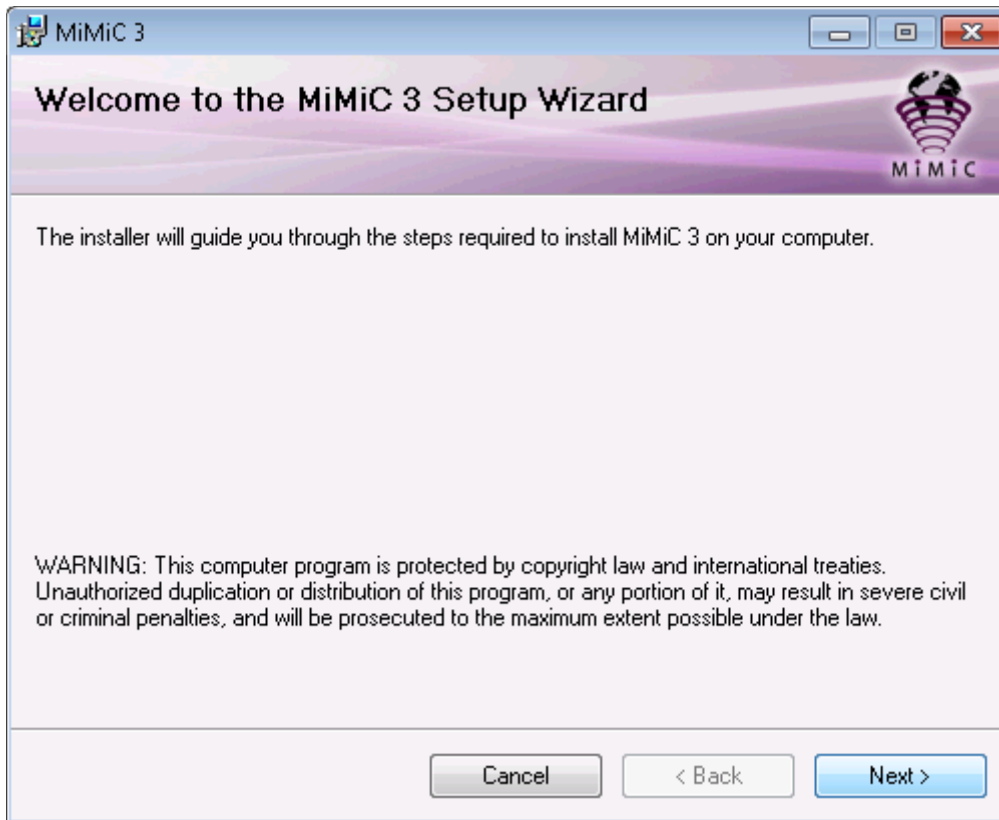




MiMiC Setup

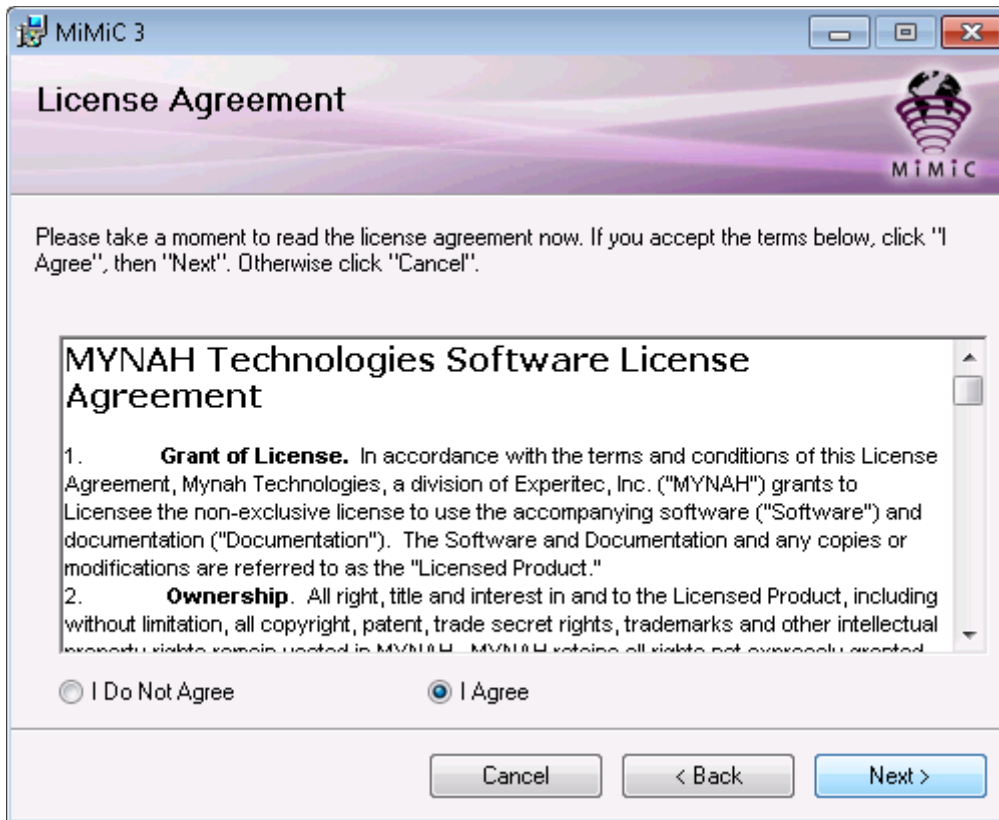
After Microsoft SQL Server has been successfully installed on the PC, the Installation Wizard will begin to install MiMiC. Click **Next**.

2. MiMiC Setup



The Installation Wizard will ask you to accept the license agreement. Read the agreement and select **I Agree** and **Next** to continue.

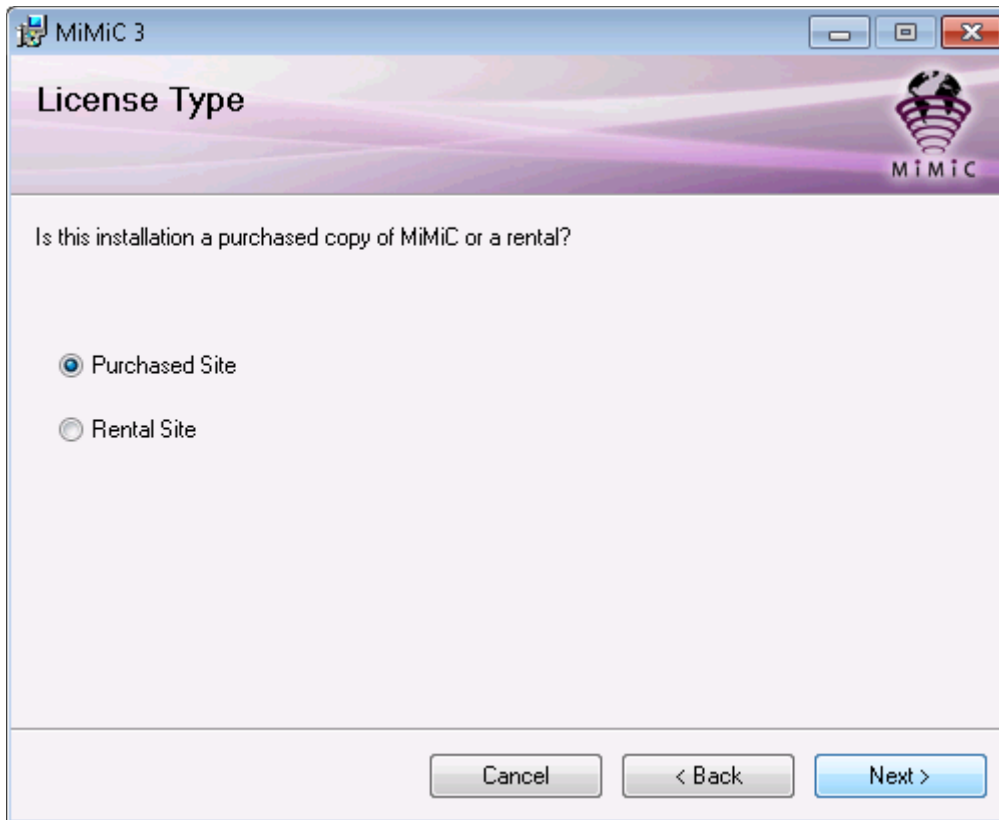
3. MiMiC License Agreement



MiMiC Installation Options

The Installer will require the user to specify whether the licensed site is a Rental or Purchased site. Select the appropriate license type, then click **Next**.

4. MiMiC License Type



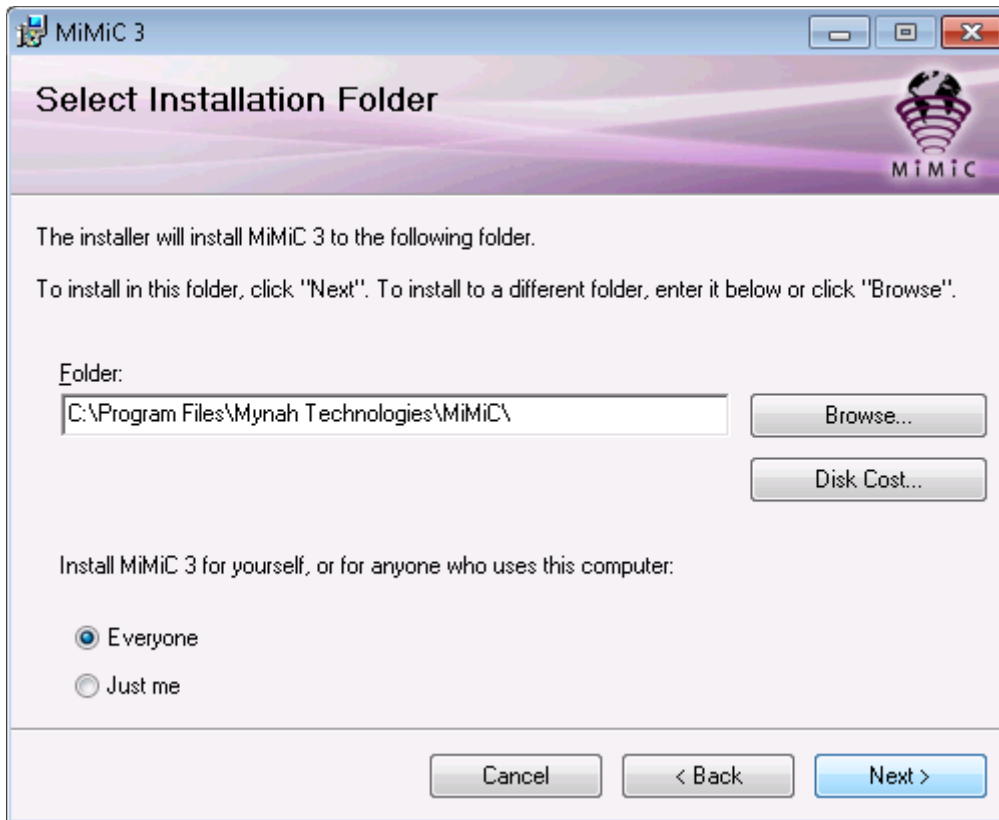
The installer will verify a location on the hard drive for the MiMiC installation. The default installation location is set to C:\Program Files. **Browse** to a different location to install MiMiC elsewhere.

Disk Cost will indicate the available space on the hard drive as well as the required space for installation.

Click **Everyone** if more than one person will log on this PC to use MiMiC. Click **Just me** if you will be the only user.

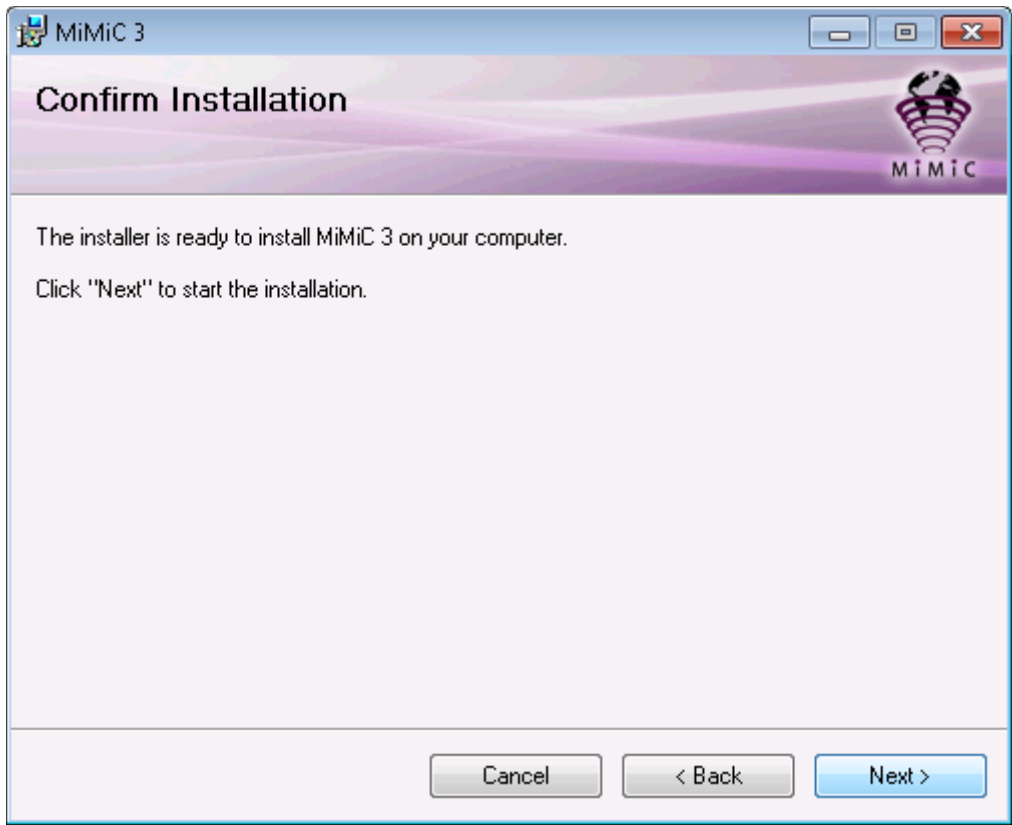
Click **Next** to continue.

5. MiMiC Installation Location



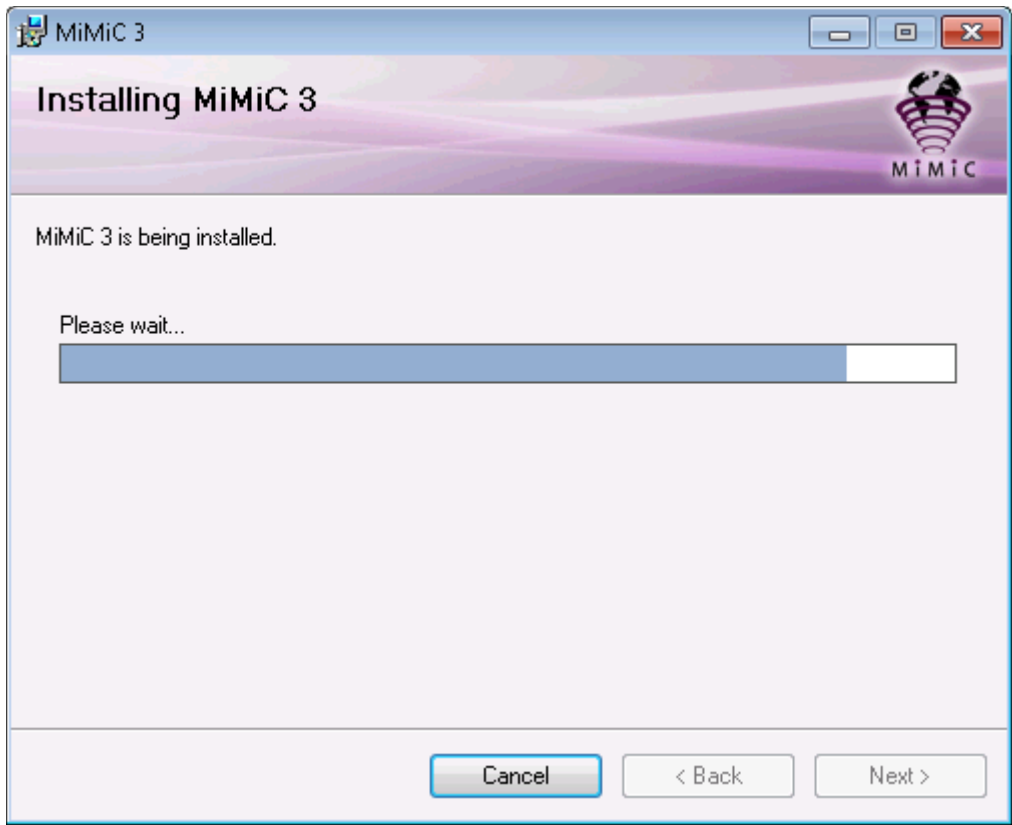
Click **Next** to Confirm and begin installation.

6. MiMiC Installation Confirmation



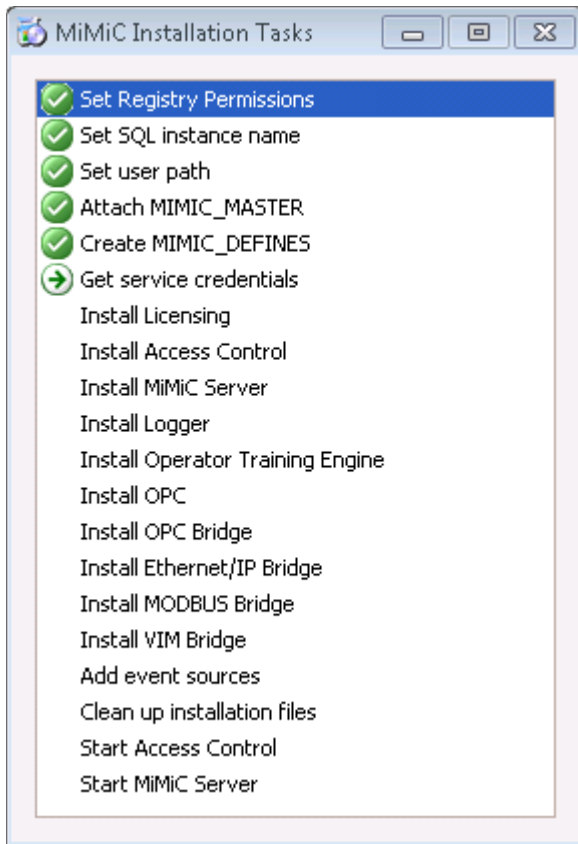
The installer will begin installation. Please wait.

7. MiMiC Installation



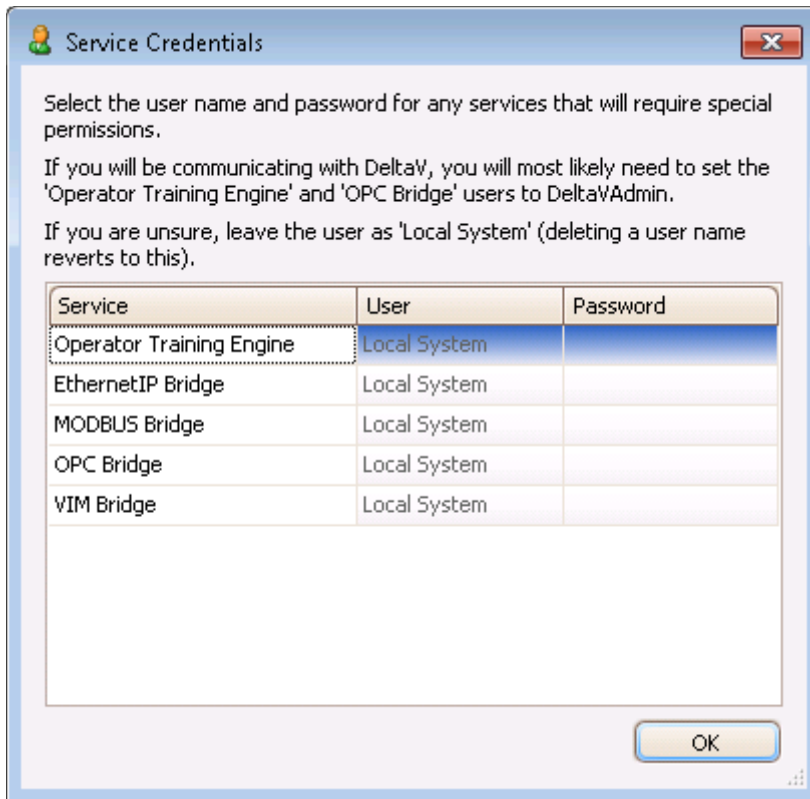
The MiMiC Installation Tasks window will appear during installation to indicate the current action of the installer.

8. MiMiC Installation Tasks



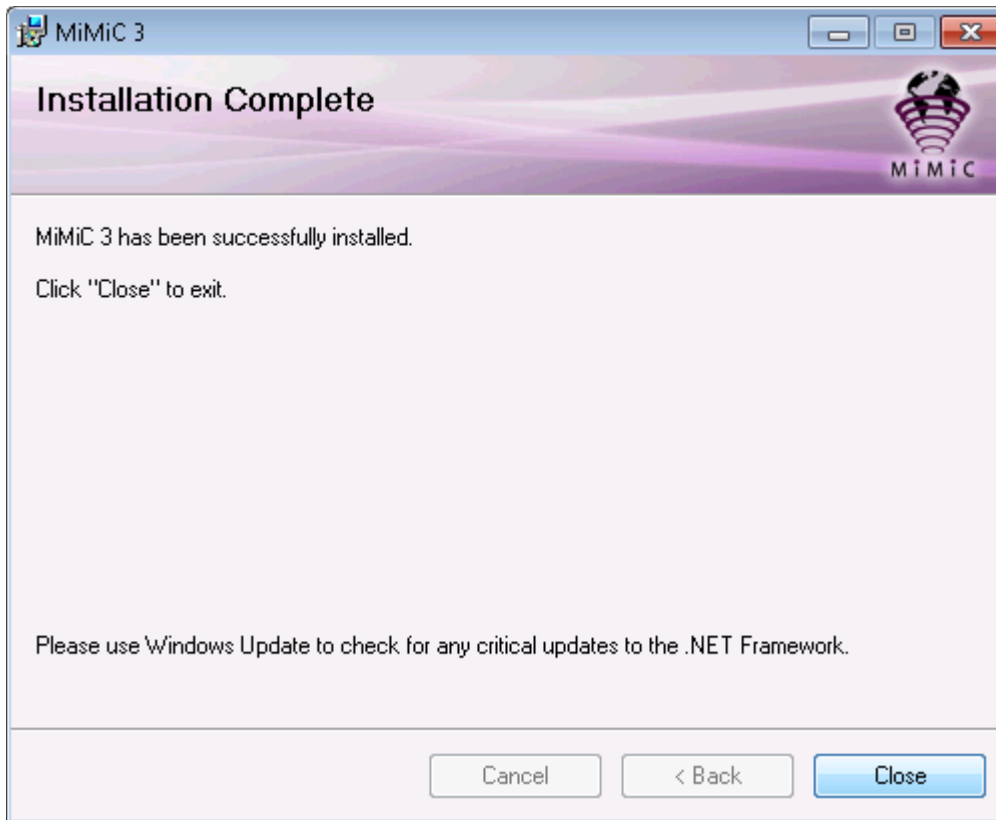
The Service Credentials window will appear during the **Get Service Credentials** event of the MiMiC Installation Tasks. Enter any necessary credentials in the prompt, then click **OK**.

9. MiMiC Service Credentials



At installation completion, click **Close**.

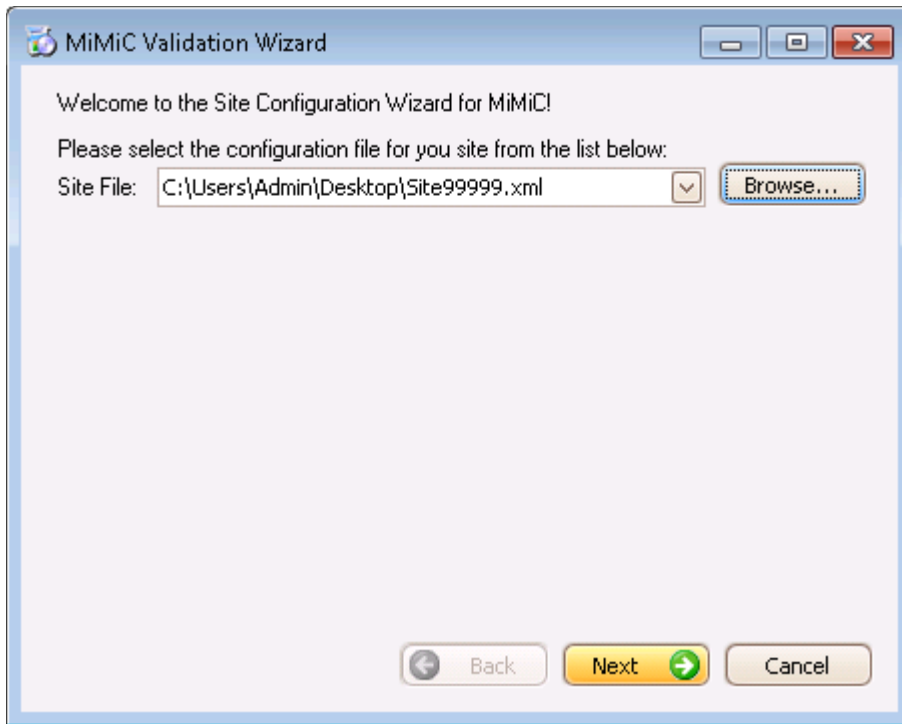
10. MiMiC Installation Complete



MiMiC Validation and Activation

After installation, the wizard automatically searches for XML Site File in order to begin software validation. You can browse for the file manually by selecting **Browse**. Click **Next** after the file has been found.

11. MiMiC Validation



The XML Site File will open. Review the content and update it as needed. Click **Next** after all fields have been populated correctly. Your Site ID is listed on your MiMiC Software License Certificate inside the CD folder.

12. XML Site File Review and Update

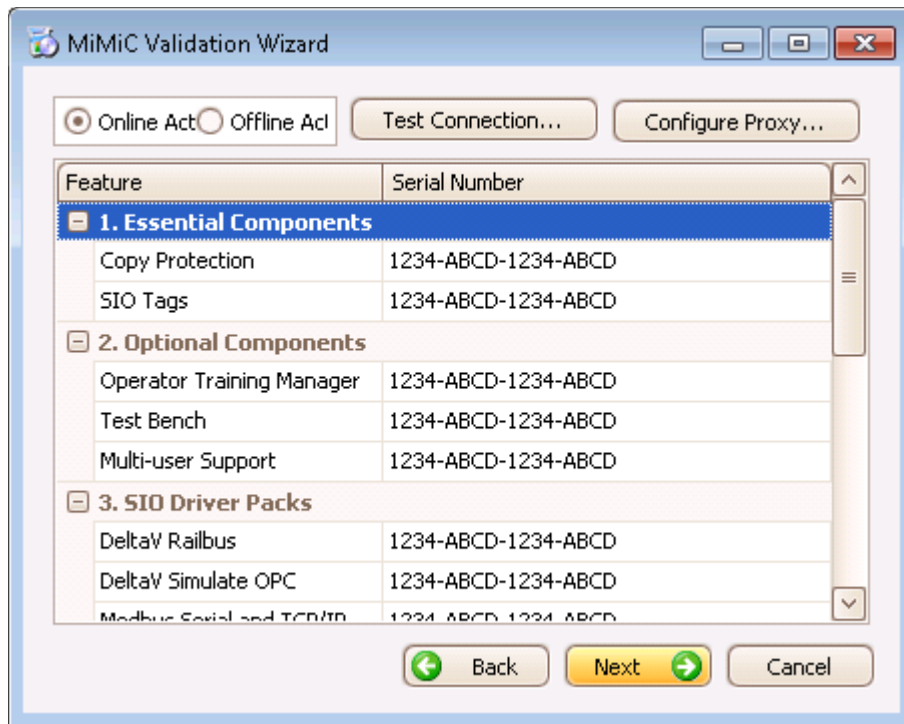
The screenshot shows a window titled "MiMiC Validation Wizard" with a light blue border. It contains several text input fields for site information. The fields are: "Site ID:" with "99999", "Company Name:" with "Mynah Technologies", "System Manager:" with "Martin B. Engineer", "Address 1:" with "504 Trade Center Blvd", "Address 2:" (empty), "City:" with "Chesterfield", "State:" with "MO", "ZIP:" (empty), "Country:" with "USA", "Phone:" with "XXX.XXX.XX", "Fax:" with "XXX.XXX.XXXX", and "E-Mail:" (empty). At the bottom are three buttons: "Back" (disabled), "Next" (highlighted in yellow with a green arrow), and "Cancel".

Choose **Online Activation** if your PC has an Internet connection. (Step 13a) Click **Next**, then skip to Step 16.

If your PC does not have an Internet connection, click **Offline Activation**. Click **Next**. Go to Step 13b.

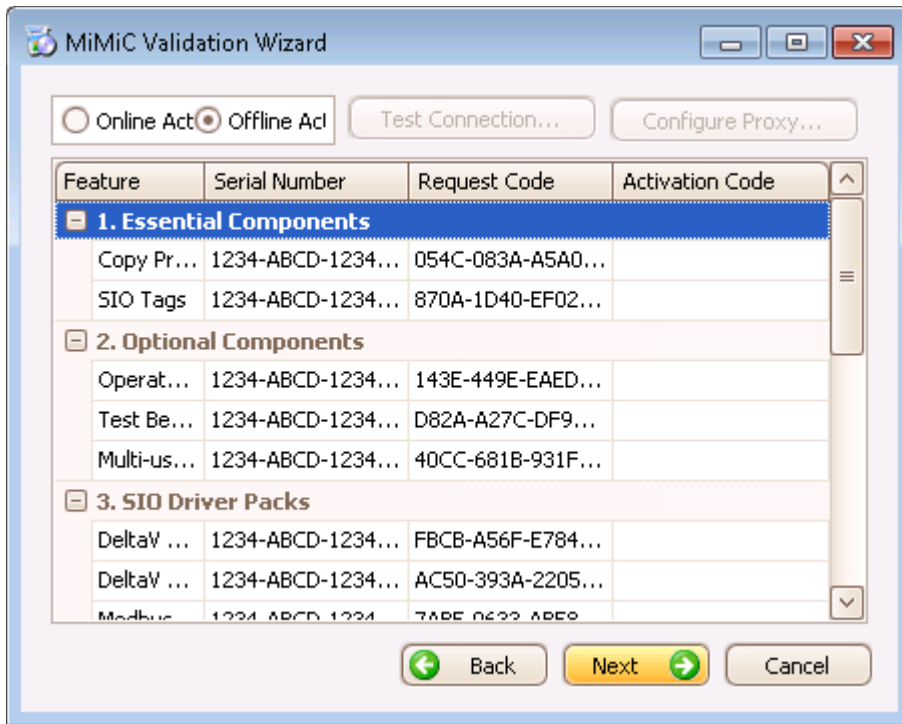
MiMiC Online Activation

13.a. MiMiC Online Activation



MiMiC Offline Activation

13.b. MiMiC Offline Activation



After you have clicked **Offline Activation** and **Next**, you will see the following dialog box. Follow the instructions in the **Activation Code(s) Missing** dialog box.

14. Site_XXXXX.xml Activation Code Update



14.a. Copy the now updated Site Configuration XML file to a computer with email access. The Site Configuration file should retain its original name.

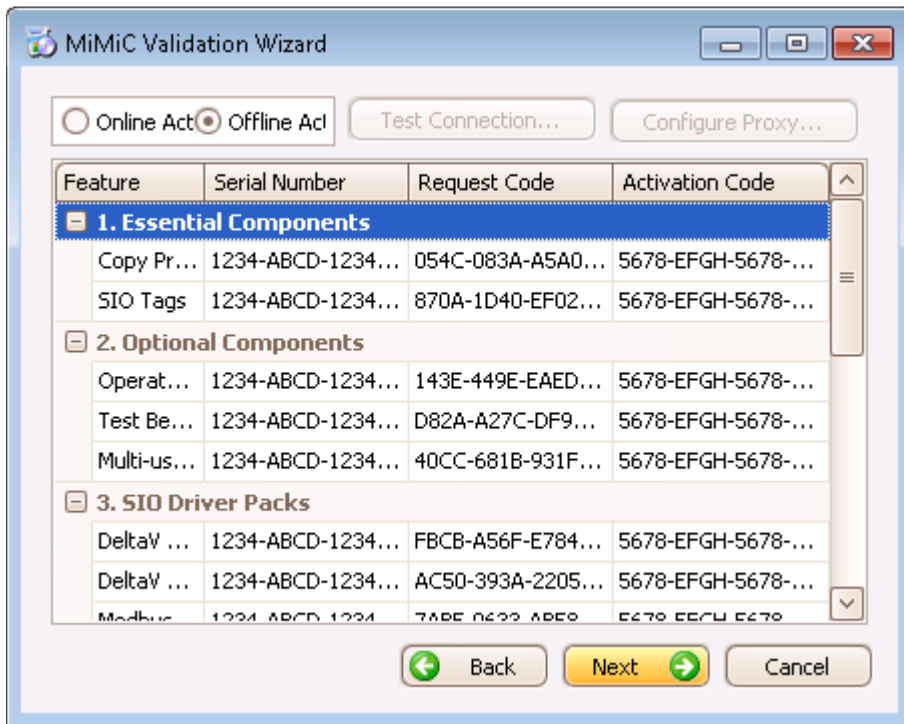
Example: Site_55555.xml

Send the file to MYNAH at v3validation@mynah.com.

14.b. Our support team will update the file to include your Activation Codes and email it back to you.

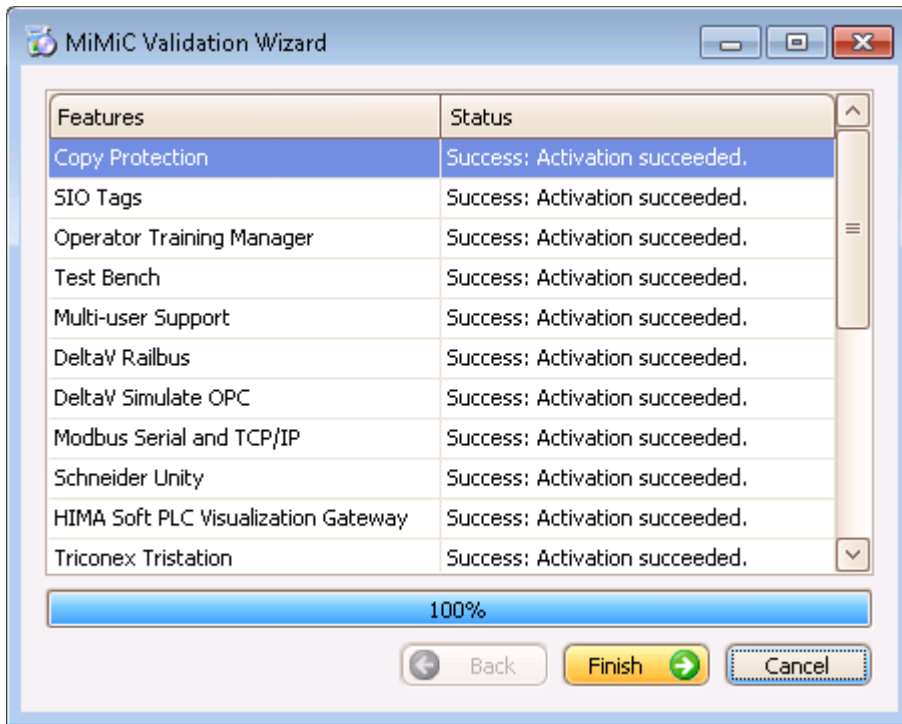
14.c. Replace the file, then re-run the Validation Wizard (siteconfig.exe). You will see the following dialog when you successfully re-run the Validation Wizard with the correct Activation Codes. Click **Next**.

15. MiMiC Offline Validation Activation



Click **Next**.

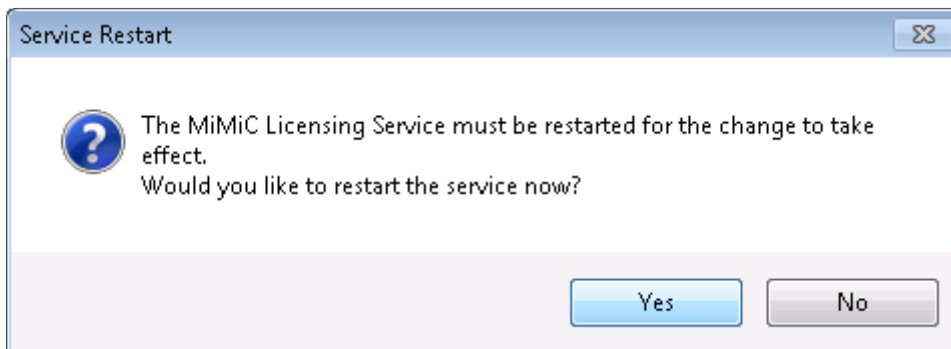
16. MiMiC Validation Success



Click **Finish**.

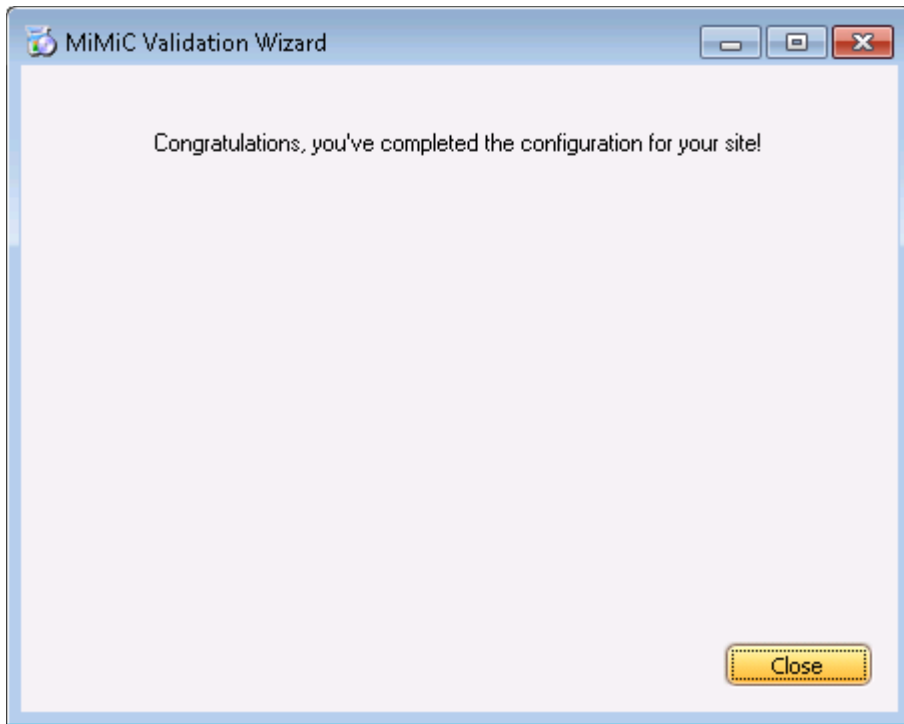
After the validation process completes, a dialog will appear asking to restart the MiMiC Licensing Service. Select **Yes** to continue.

17. Restart MiMiC Licensing Service



Click **Close**.

18. Completion



Installation Complete

You have successfully completed the MiMiC installation and validation. Look for more guides on using MiMiC in the "Using MiMiC" section of the MiMiC Help documentation. The next step is to create a simulation database, either manually, or by using one of the utilities in the [Tools menu of MiMiC Explorer](#).